



ENGINE

Due to constantly increasing requirements on climate protection, tekfor develops innovative solutions that impress due to lightness and optimized performance. By using our weight- and friction-reduced components in vehicles all over the world, fuel is saved and CO₂ emissions are significantly reduced.

Newly developed high-end materials combined with engineering support and application know-how make us a globally important development partner for OEMs – always with the goal of optimizing costs, robustness and service life.

CONRODS

- Use of high-strength materials
- Weight-optimized design through simulation of manufacturing processes
- High vertical range of manufacture through forming and finishing from a single source
- Integration of variabilities



CAMSHAFT

- Weight reduction of up to 45 % thanks to hollow design and optimized assembly of the end fitting
- Secure and calculable interference fit assembly
- Tube wall thickness reduced to 2 – 2.5 mm
- No grinding necessary following assembly
- All geometries can be produced, including very small negative radii
- High surface pressure can be transferred thanks to cam lobes made of 100Cr6
- Finishing and DLC coating on single cams possible



ASSEMBLED CAM PIECE

- Application based on patented assembly method
- Modular design: shaft, cams and shifting gate made of various materials
- Lightweight construction using high-strength materials



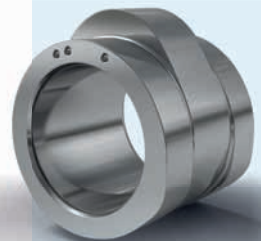
CAM

- Processes developed in-house as well as production and testing facilities for high-strength materials
- All common geometries can be realized in the field of hot forging
- Production of more than 80 million cams per year
- Process development and support in the selection of materials and heat treatment on the basis of many years of know-how



TRIPLE CAM

- Three different cam profiles integrated in one component
- Highly efficient production based on own developed processes
- 100 % testing on integrated measuring cells



PUMP CAM

- Customer-specific development of toothing
- Friction reduction due to superfinished profile
- Special heat treatment process to increase wear resistance between cam and roller

