

## **SPECIAL APPLICATION**

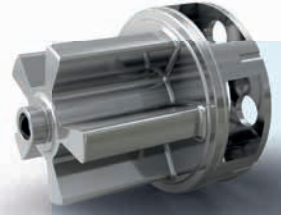
---

When it comes to safety issues, such as steering, brakes, airbags, etc., the specialized know-how of our development engineers makes a convincing case. We rely on the Tekfor Group's global infrastructure, process

competence and its production capacities for the development of creative and innovative solutions. We manufacture ready-to-use, individual components with a high degree of precision and in large quantities.

## **ROLL STABILIZER FOR PLANETARY CARRIER**

- The final contour is pressed on the coupling side and can be directly rubberized
- Extensive knowledge in the production of non-rotationally symmetric forming by cold forming
- No time-consuming 5-axis machining
- In the planetary drive, the supports are already pre-formed and the free spaces are completely pressed



## **ROLL STABILIZER FOR DRIVER**

- Savings in material due to cold forming of the inner mold and in machining
- High precision due to cold pressing of the Hirth joint
- Uniformity due to excellent processes



## **SPECIAL BUSHING**

- Optimum material distribution through cold forming and special tools
- Minimal mechanical processing required
- No heat treatment necessary due to high strain hardening
- Unsurpassed fatigue strength due to large radii and fiber course



## **FREEWHEEL HUB**

- Extensive know-how in the combination of complex manufacturing processes
- Complete in-house production possible
- Coordination of thermo and cold forming, machining and heat treatment
- High-quality requirements because it is a safety-relevant component



## **TENSION ROD BUSHING**

- Our processes offer ideal material utilization; material usage = part weight
- High load-bearing capacity due to stress-compliant fiber course
- Lightweight construction and rigidity do not conflict due to supporting ribs and thin walls
- The component is manufactured in one piece without complex joining operations

